



# Healthcare Surfaces Redefined



## Design performance has never looked so good

Staron has completely redefined the concept, design and application of acrylic solid surface – including what it can do, how it performs and how it can improve healthcare environments both visually and hygienically. Acrylic Solid surface is not just for countertops anymore – it's now the perfect choice for just about any surface in a healthcare setting. Durable and ultra-hygienic, Staron ushers in a whole new world of solid surface application with an extensive selection of colors, designs and patterns – plus the capability to thermo-form and install without visible, seams, gaps or joints.

## A perfect blend

Staron is a versatile and durable composite material that is manufactured by blending high-performance acrylic with organic fillers and pigments.



## Infinite uses for healthcare

Nurses' stations, examination areas, patient rooms, restrooms, cafeterias, dispensaries, reception areas or literally any other interior horizontal or vertical surface – including wall cladding and wainscoting – can be enhanced and improved with Staron.

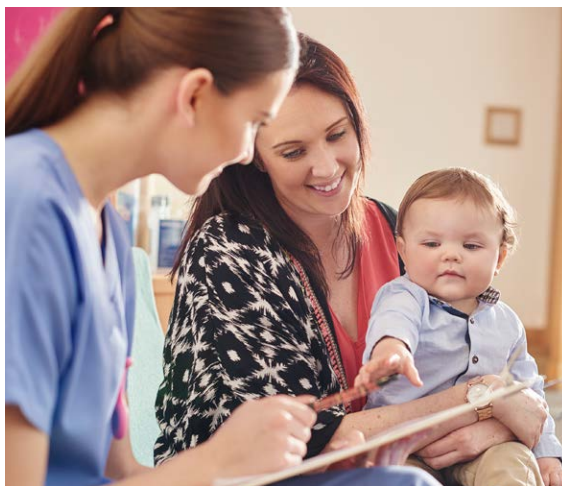
## The designer and user choice

Staron is quickly becoming the preferred surface material for healthcare interiors due to its hygienic properties, incredible design flexibility, color selection and ability to be inconspicuously repaired. More importantly, Staron surfaces are easily maintained and do not have open joints or seams that can trap moisture or foster the growth of bacteria or spread of pathogens.



## Soothing therapeutic solutions

In healthcare environments the health and well-being of patients is paramount, and patient surroundings play a vital role. Staron Solid Surface offers designers and facility managers all the choices they desire via colors, patterns, finishes and dimensional flexibility – to create patient care areas that are truly relaxing and nurturing spaces which help promote recovery and healing. Many Staron colors have been designed with input from color therapy specialists specifically for healthcare interiors, and can improve the mood of any room.





# Preventing the spread of infection starts at the surface

Staron acrylic solid surface is non-porous and not affected by moisture so it will not support the growth and spread of bacteria or mold. A seamless adhesive installation process eliminates gaps and crevices where pathogens could propagate – providing an extra level of hygiene. Cleaning and sanitizing is easily accomplished with typical healthcare cleaning solutions.



## Sustainable:

Manufactured to strict environmental standards meeting all codes and regulations for interior construction materials.

## Seamless Installations:

Seamless installation improves design flow – there are no open joints or seams to trap unwanted dust, fluids or contamination.

## Versatile Design:

Dozens of color offerings are available from calming neutral to playful bold tones – ideal for healthcare interiors.

## Easy to Maintain:

Staron is a homogeneous, color-through product, making it repairable and restorable to a new condition – often just by light sanding and polishing.

## Superior Quality:

Staron Solid Surface is far more durable and longer-lasting when compared to plastic laminates – which makes it perfect for high traffic environments.

# The Wonders of Staron Solid Surface

## Non-porous:

Impervious surface inhibits the growth of bacteria or mildew and reduces the possibility of cross-contamination.

## Resistant to Stains and Chemicals:

Resists various chemicals, fluids and contaminants often found in healthcare environments.

## Easy to clean:

Cleaning and sanitizing is accomplished with non-abrasive wipe-on or spray-on products common to healthcare.

## Excellent Durability:

Superior strength and impact-resistance means less maintenance and a longer, more cost-effective life cycle.

## Homogeneous:

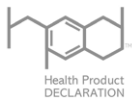
Staron is a homogeneous product which means there is no surface layer to wear or delaminate – it's completely color-through.



## Exceeding Commercial Healthcare Standards

Surface materials used in healthcare environments must meet stringent standards and requirements and be able to withstand the high demands of everyday use. At the same time, the interior architecture and décor must convey a feeling of comfort, peacefulness and well-being. Staron Solid Surface excels in both areas, is flame-resistant (ASTM E 84 Tested), Class A / Class 1 Fire Rating Certified and has a 10 Year Limited Commercial Warranty.

## Technical Certificates



Healthcare Product Declaration



GREENGUARD Certified



CAN/ULC-S102 Certified  
Class I (A) Fire rated



LEED Certified



\*SCS recycled content



NSF/ANSI Standard 51  
Certified for food contact



Low VOC



ISO 9001



ISO 14001



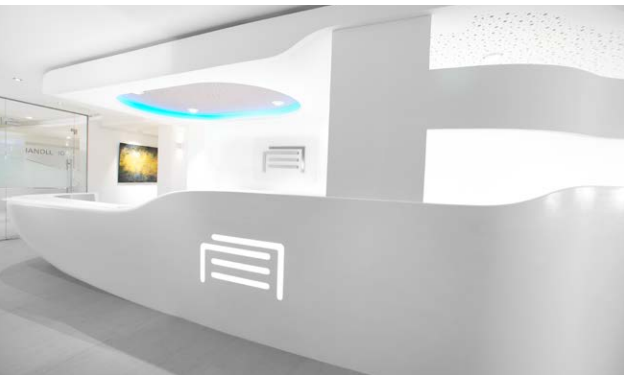
IAPMO  
sinks and lavatories certification

*\*Staron products with recycled content are identified with this label. Certified to help contribute towards U.S. Green Building Council LEED points*



## Wall Cladding & Wainscoting

Staron acrylic solid surface is an excellent all-around wall cladding and wainscoting material when it comes to design, traffic and maintenance considerations. A generous range of colors and patterns ensures the “right look” every time.



## Reception Areas

Reception areas are usually the first part of a healthcare facility that patients, their families and visitors see – so a positive first impression is vital. Staron Solid Surface offers the design flexibility and selection to create one-of-a-kind custom designs.





## Diagnostic Laboratories

Diagnostic labs really put surface materials to the “test” on a daily basis. Countertops and other work surfaces must be stain, water, chemical and heat resistant – plus easy to clean. Staron Solid Surface excels in all categories.



## Examination Rooms

Examination rooms need to be soothing for patients, functional for medical professionals and simple to clean and sanitize. Staron's non-porous and seamless installation properties make it ultra-hygienic and the ideal choice for any casework surface.

## Nurses' Stations

Nurses' stations are the nerve centers of healthcare facilities and must be user-friendly, ergonomic environments. Staron offers a clean and hygienic surface that can be custom-fabricated into unlimited configurations for ultimate efficiency and durability.



## Patient Rooms

Patient rooms must be the perfect blend of form and function. Well-designed and soothing natural color schemes lift spirits, improve patient recovery times and enhance rehabilitation. Smooth, non-porous acrylic solid surfaces are proven to reduce the risk of complications related to the spread of infection.





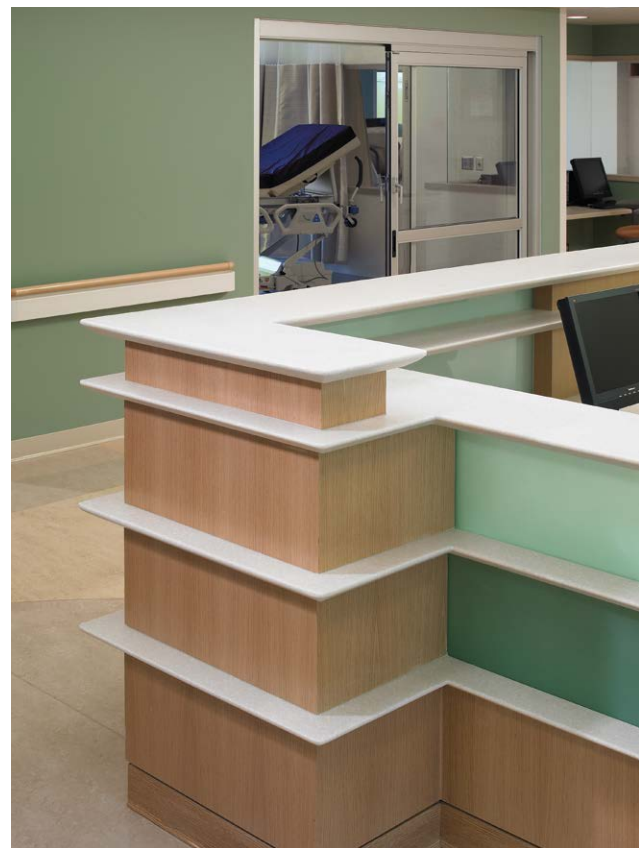
## Clean Rooms

Staron has a number of potential applications in personal-care areas, including countertops, integral sinks, toilet partitions, shower walls, storage and shelves – or anywhere an ultra-hygienic virus/germ-resistant surface is required.



## Public Areas

Design considerations are always important, but in public areas the focus is equally on product durability, maintenance requirements and repairability. Staron Solid Surface is tough, easy to maintain, can be professionally restored to a new condition at any time, and has a longer more cost-effective life cycle compared to other surface materials.





*Designer: Luke Pendergast  
Company: Conrad Gargett  
Photography: Christopher Frederick Jones*



## STARON® PROVIDES UNIVERSITY LABORATORY WITH STATE-OF-THE-ART SURFACES

Seamless, non-porous and hard-wearing, Staron Solid Surface proved to be an ideal fit in the design of a new, wet laboratory facility.

The Teaching Space Project delivered a high-tech PC2 undergraduate interactive wet laboratory facility. The space has been designed to fill identified key gaps in the school's upper-level undergraduate teaching program. The new teaching facility is located within the University of Queensland's Great Court Complex.

The project provides the ability to instruct students in modern biological techniques requiring a high level of containment, and the capacity to deliver small-group tutorial-based instruction within the context of computer-based learning. The aim was to provide high quality, state-of-the-art teaching spaces that are future oriented and have the facilities and flexibility to teach 21st century biology.

Within the laboratory Staron Solid Surfaces were used for the desks, including desk legs and foot rests, custom built sinks and wall linings in Staron color Aspen Glacier. These Staron surfaces were used not only for their visual appearance and design flexibility, but also because they are hard wearing, non-porous and seamless — making it an ideal product for physical containment laboratory design.





# Staron® Color Chart

SOLID



Solid Quasar White



Solid Bright White



Solid Pure White



Solid Pearl



Solid Ivory



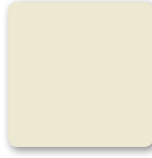
Solid Blonde



Solid Celadon



Solid Placid



Solid Tusk



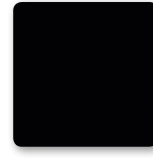
Solid Sunflower



Solid Serene



Solid Univers



Solid Onyx 1

SANDED



Sanded Icicle



Sanded Cream



Sanded Birch



Sanded White Pepper



Sanded Papyrus



Sanded Linen



Sanded Sahara



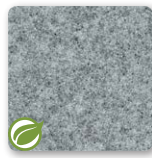
Sanded Gold Dust



Sanded Vermillion



Sanded Cornmeal



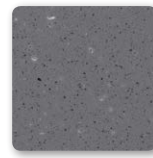
Sanded Grey



Sanded Clay



Sanded Meadow



Sanded Tundra 1



Sanded Mocha 1



Sanded Chestnut

PEBBLE



Pebble Frost



Pebble Swan



Pebble Saratoga



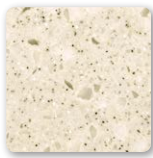
Pebble Gold



Pebble Chiffon



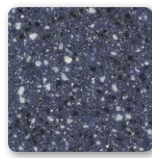
Sanded Onyx 1



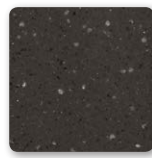
Pebble Tea Rose



Pebble Grey



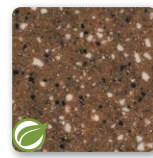
Pebble Blue 1



Pebble Chocolate



Pebble Seastar



Pebble Copper 1

ASPEN



Aspen Snow



Aspen Lily



Aspen Pepper



Aspen Brown



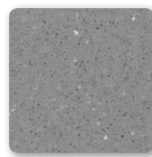
Aspen Alder



Aspen Pond



Aspen Cliff

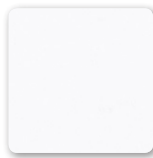


Aspen Concrete



Aspen Sky

METALLIC



Metallic Yukon 2



Metallic Sleeksilver 1 2



Metallic Satingold 1



Metallic Galaxy 1 2



 Recycled Series

- ① Consult with your Staron specialist for best use of this color
- ② Contains metallic flakes that have reflective properties, which may not be fully recognized in color depending on the angle of view
- ③ Noted colors exhibit increased movement and variation of color and pattern which cannot be fully recognized on some samples

Printed representation of colors may vary from actual samples.  
 Please contact your local Staron sales specialist to obtain appropriate samples prior to selection.

# Staron® Performance Properties

The information contained herein is provided by Lotte Advanced Materials and its subsidiaries and affiliates for information purposes only and should be used by individuals with technical experience and knowledge in the area. Lotte Advanced Materials does not make any representation or warranties of the usefulness or expected result of the information, and does not assume any responsibility whatsoever related to the use of the information. Exclusion of the implied warranties may not apply in certain jurisdictions.

PROPERTIES	TYPICAL RESULTS	TEST PROCEDURE
Tensile strength	6,000 psi	ASTM D 638
Tensile modulus	600,000 psi	ASTM D 638
Flexural strength	10,000 psi	ASTM D 790
Flexural modulus	1,000,000 psi	ASTM D 790
Elongation	0.50%	ASTM D 638
Hardness	92 Rockwell "M" Scale 65 Barcol Impressor	ASTM D 785 ASTM D 2583
Thermal expansion	2.0 x 10 <sup>-5</sup> in/in F°	ASTM D 696
Gloss (60 Gardner)	Between 5-20	NEMA LD-3
Color stability	No change-200 hrs	NEMA LD-3
Stain resistance	Pass Rating 41	ANSI Z 124
Abrasion resistance	Pass	ANSI Z 124
Boiling water surface resistance	No effect	NEMA LD-3
High temperature resistance	No effect	NEMA LD-3
IZOD Impact resistance (notched)	0.28 ft.lbf/in	ASTM D 256
Ball drop 1/2" (12.3 mm) sheet	144" w/ 1/2 lb ball, No failure	NEMA LD-3
Fungi and Bacterial resistance	No growth	ASTM G 21, G22
Specific gravity	1.72	ASTM D 792
Solid colors	1.69	
Patterned colors		
Water absorption	0.04%, (1/2", 24hrs)	ASTM D 570
Flammability	Class A / Class 1	UBC 8-1
Flame spread	10	ASTM E 84
Smoke density	10	ASTM E 84
Radiant heat resistance	No visual effect	NEMA LD-3
Toxicity	84.4g (Solid Color) 81.8g (Patterned Color)	Pittsburgh Test Protocol (LC50 Test)



## Staron® Sheet Dimensions

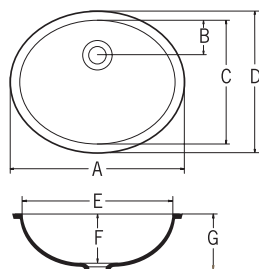
Standard sheet dimensions for all color groups are ½" (1mm) thick; 30" (760mm) wide and 145" (3,680mm) long.

Also available in ¼" (6mm) thick; 30" (700mm) wide and 98" (2,500mm) long for Solid, Sanded and Aspen Only.

(Not recommended for countertops or other horizontal applications.)

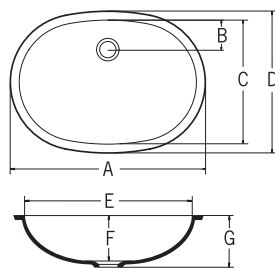
## Staron® Sinks and Bowls Dimensions

**A3181**



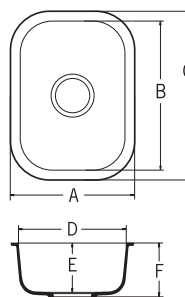
A	18-3/16"	[462mm]
B	3-11/16"	[94mm]
C	13-1/4"	[336mm]
D	14-13/16"	[376mm]
E	16-5/8"	[422mm]
F	5-1/2"	[139mm]
G	6-1/8"	[156mm]

**A3211**



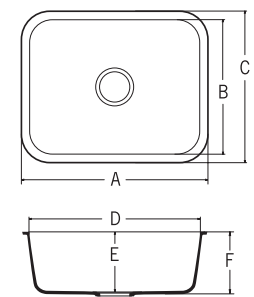
A	21-9/16"	[548mm]
B	3-3/8"	[86mm]
C	14"	[356mm]
D	15-9/16"	[396mm]
E	20"	[508mm]
F	6-1/8"	[156mm]
G	6-13/16"	[173mm]

**A1131**



A	13-7/16"	[341mm]
B	15-3/4"	[400mm]
C	18-1/8"	[460mm]
D	11-1/16"	[281mm]
E	5-1/4"	[133mm]
F	5-7/8"	[148mm]

**A1231**



A	23-5/16"	[592mm]
B	16-5/8"	[422mm]
C	19"	[482mm]
D	20-15/16"	[532mm]
E	7-3/8"	[187mm]
F	7-15/16"	[202mm]

*Sinks & bowls are available in Bright White, Pearl and Ivory.*

*Though the information contained herein is deemed reliable, none of the contents—including but not limited to the instructions, techniques, graphics, and recommendations—is to be understood as implying legal liability of fitness for a specific purpose, any other type of warranty, or being complete or absolute in its range and nature of information.*

*Depending on the user's particular application, all necessary measures must be taken to verify and test the adequacy for such needs or application. Any information or recommendation herein is strictly for purposes of reference and as such, Lotte Advanced Materials assumes no responsibility for its suitability or accuracy or the use of such information for products other than Lotte Advanced Materials Staron® Solid Surfaces and Radianz® Quartz Surfaces.*



**LOTTE**  
ADVANCED MATERIALS

Lotte Advanced Materials Europe GmbH

Tel. +49 (0) 6196 77 27 275

E-mail : [staron.eu@lottechem.com](mailto:staron.eu@lottechem.com)

[www.staronhealthcare.com](http://www.staronhealthcare.com)