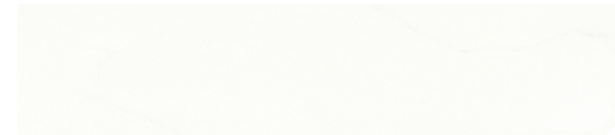


COLOURS OF STARON

Supreme™



Morning Sky VM114 NEW



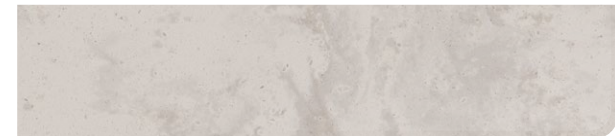
Beige Granite VB172 NEW



Delphi VD111



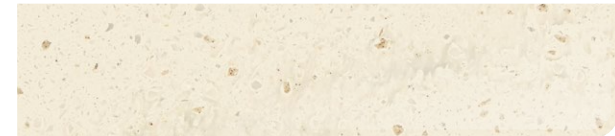
Cloudbank VC118



Dawn VD126



Magnolia VM143



Natural Bridge VN144

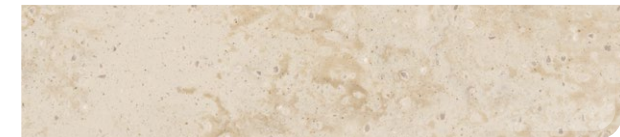
• To view new colours in greater detail, please visit www.staron.com
 • These colours may require extra care and maintenance; consult with your Staron processor for the best use of these colours.



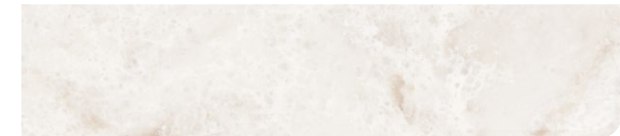
Cotton White VC110 NEW



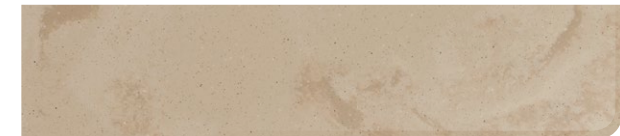
Urban Grey VU127 NEW



Dandelion VD175



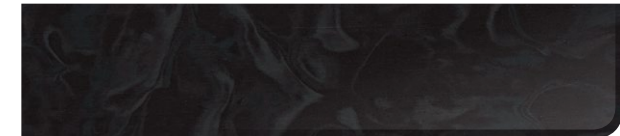
Ocean View VO171



Pastoral VP177



Loam VL155



Presto VP159

SOLID



Quasar White SQ019 **Dazzling White** SD001 **Pure White** SP016



Bright White BW010 **Pearl** SP011 **Natural** SV041



Tusk ST015 **Ivory** SI040 **Blonde** SB043 ❖



Fog SF020 **Cool Mint** SC063 ❖ **Powder Blue** SP063 ❖



Mist SM022 **Placid** SP062 ❖ **Oasis** SO064 NEW



Bliss SB022 ❖ **Serene** SS023 ❖ **Steel** ST023 ❖



Sunflower(N) SS042 **California Poppy(N)** SC052 ❖ **Univers(N)** SU053 ❖



Iris SI056 ❖ **Onyx** ON095 ❖

Eco-friendly Materials, Staron

Stock availability varies by colour and size.
 Printed representation of colours may vary from actual samples.
 Please review actual sample prior to selection.

- ♻️ Staron recycled content series.
- ❖ The colour may require additional maintenance.

SANDED



Sanded Icicle SI414 **Sanded White Pepper** WP410 **Sanded Birch** SB412



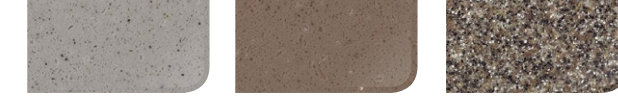
Sanded Cream SM421 **Sanded Sahara** SS440 **Sanded Gold Dust** SG441



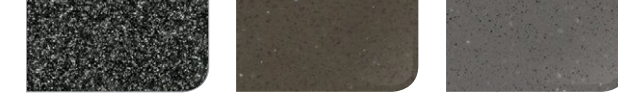
Sanded Stratus SS418 **Sanded Cornmeal** SC433 **Sanded Oatmeal** SO446



Sanded Papyrus SP474 **Sanded Vermillion** SV430 **Sanded Meadow** SM465 NEW



Sanded Heron SH428 **Sanded Clay** SC475 **Sanded Mocha** SM453 ❖



Sanded Dark Nebula DN421 **Sanded Chestnut** SC457 NEW **Sanded Tundra** ST482 ❖



Sanded Grey SG420 **Sanded Taupe** ST486 NEW **Sanded Onyx** SO423 ❖

ASPEN



Aspen Glacier AG612 **Aspen Snow** AS610 **Aspen Lily** AL645 ❖



Aspen Alder AA625 NEW **Aspen Fiesta** AF611 **Aspen Pepper** AP640



Aspen Pond AP665 NEW **Aspen Concrete** AC629 NEW **Aspen Brown** AB632

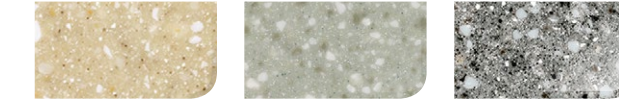


Aspen Mine AM633 ❖ **Aspen Sky** AS670 ❖

PEBBLE



Pebble Ice PI811 **Pebble Swan** PS813 **Pebble Saratoga** SP016

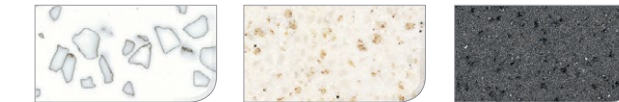


Pebble Gold PG840 **Pebble Aqua** PA860 **Pebble Grey** PG810



Pebble Blue PB870 ❖ **Pebble Terrain** PT857 ❖ **Pebble Ebony** PE814 ❖

QUARRY



Mosaic Dalmatian QD212 ❖ **Quarry Oyster** TO310 **Quarry Starred** QS287



Earthen Bark QL257 **Quarry Minette** QM289

METALLIC



Metallic Yukon EY510 **Metallic Beach** EB545 **Metallic Satingold** ES558



Metallic Sleeksilver ES581 **Metallic Galaxy** EG595 ❖

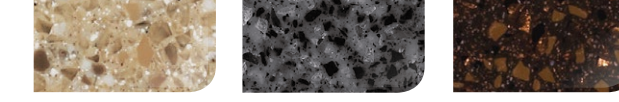
tempest®



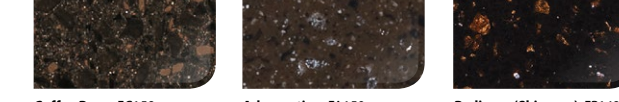
Peak FP100 **Polar** FP111 **Meteor** FM111



Sonoma FS143 NEW **Silvercloud** FS122 **Genesis** FG174



Rattan FR124 **Zenith** FZ184 **Blaze** FB147



Coffee Bean FC158 **Adamantine** FA159 **Radiance (Shimmer)** FR148



Caviar FC188 **Gold Leaf** FG196 **Dazzle** FD191



Starfire FS198





APPLICATIONS

- Examination rooms
- Nurses stations
- Counter tops / Vanity tops
- Lavatories and public restrooms
- Contract furniture / Conference tables
- Reception desks
- Transaction counters
- Food service and beverage counters
- Displays and fixtures
- Window sills / Wall caps

PRODUCT DIMENSIONS

PATTERN	THICKNESS	WIDTH	LENGTH
Solid	1/4in, 6mm	30in, 760mm	98in, 2,500mm
Sanded	1/2in, 12mm	30in, 760mm	145in, 3,680mm
Aspen			
Pebble			
Metallic			
Quarry	1/2in, 12mm	30in, 760mm	145in, 3,680mm
Supreme			
Tempest			

STARON®

10-YEAR LIMITED WARRANTY

The 10-year warranty applies to Staron®, Tempest and Supreme Collection products that have been installed in an interior, commercial-use or residential application. For more details, please consult with your Staron® products distributor, or visit www.staron.com

DISCLAIMER

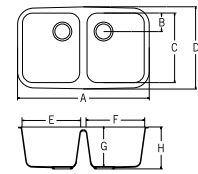
The information contained herein is provided by LOTTE ADVANCED MATERIALS Co., Ltd. for information purposes only and should be used by individuals with technical experience and knowledge in the area. LOTTE ADVANCED MATERIALS Co., Ltd. does not make any representation or warranties of the usefulness or expected result of the information, and does not assume any responsibility whatsoever related to the use of the information. Exclusion of the implied warranties may not apply in certain jurisdictions.

SINKS AND BOWLS

ADA Compliant

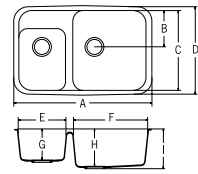
KITCHEN / UTILITY SINKS

A2311



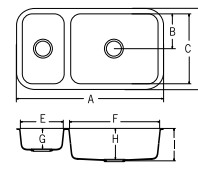
- A 31-1/4" (794mm)
- B 4-15/16" (110mm)
- C 16-9/16" (421mm)
- D 18-15/16" (481mm)
- E 13-11/16" (348mm)
- F 13-11/16" (348mm)
- G 9-1/4" (235mm)
- H 9-13/16" (250mm)

A2321



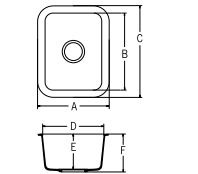
- A 32-13/16" (834mm)
- B 8-13/16" (244mm)
- C 19-1/4" (488mm)
- D 21-9/16" (548mm)
- E 11-5/16" (287mm)
- F 17-9/16" (446mm)
- G 7-1/2" (191mm)
- H 9" (229mm)
- I 9-5/8" (244mm)

A2341



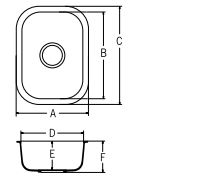
- A 34-7/8" (886mm)
- B 8-3/8" (213mm)
- C 16-3/4" (426mm)
- D 19-1/8" (486mm)
- E 10" (254mm)
- F 21" (533mm)
- G 5" (127mm)
- H 7-1/2" (191mm)
- I 8-1/16" (206mm)

A1121



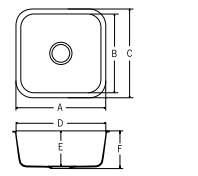
- A 12-13/16" (326mm)
- B 14" (356mm)
- C 16-3/8" (416mm)
- D 10-3/8" (266mm)
- E 6-1/2" (165mm)
- F 7-1/16" (180mm)

A1131



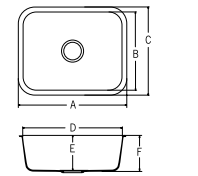
- A 13-7/16" (341mm)
- B 15-3/4" (400mm)
- C 18-1/8" (460mm)
- D 11-1/16" (281mm)
- E 5-1/4" (133mm)
- F 5-7/8" (148mm)

A1181



- A 18-1/8" (460mm)
- B 15-3/4" (400mm)
- C 18-1/8" (460mm)
- D 15-3/4" (400mm)
- E 8-3/16" (208mm)
- F 8-7/8" (225mm)

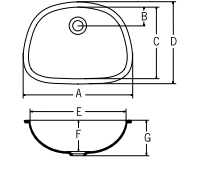
A1231



- A 23-5/16" (592mm)
- B 16-5/8" (422mm)
- C 19" (482mm)
- D 20-15/16" (532mm)
- E 7-3/8" (187mm)
- F 7-15/16" (202mm)

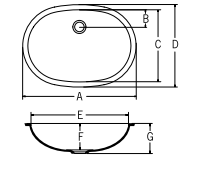
LAVATORY SINKS / BASINS

A3201



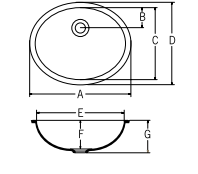
- A 20-3/8" (517mm)
- B 3-3/8" (86mm)
- C 13-5/8" (346mm)
- D 15-3/16" (386mm)
- E 18-13/16" (477mm)
- F 5-1/2" (140mm)
- G 6-3/16" (157mm)

A3211



- A 21-9/16" (548mm)
- B 3-3/8" (86mm)
- C 14" (356mm)
- D 15-9/16" (396mm)
- E 20" (508mm)
- F 6-1/8" (156mm)
- G 6-13/16" (173mm)

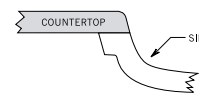
A3181



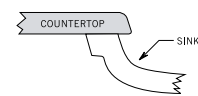
- A 18-3/16" (462mm)
- B 3-11/16" (94mm)
- C 13-1/4" (336mm)
- D 14-13/16" (376mm)
- E 16-5/8" (422mm)
- F 5-1/2" (139mm)
- G 6-1/8" (156mm)

MOUNTING OPTIONS

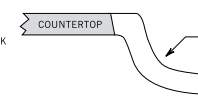
Seam mount



Under mount



Angled mount



An integral sink will improve the efficiency and hygienic qualities of a kitchen or bath area and, particularly, interior commercial applications. Staron all-acrylic sinks and bowls are installed in combination with Staron sheet materials as part of a continuous surface featuring imperceptible seams for a perfect, uninterrupted fit. That also means there are no gaps or crevices for bacteria or mold to accumulate and grow. Whichever style you choose, Staron's non-porous, hygienic surfaces will always be easy to clean and maintain. Choose from three coordinated sink colour options from a collection of ten, popular models. Staron sinks come in the following colours:

Colour Options



Bright White BW010



Pearl SP011



Ivory SI040